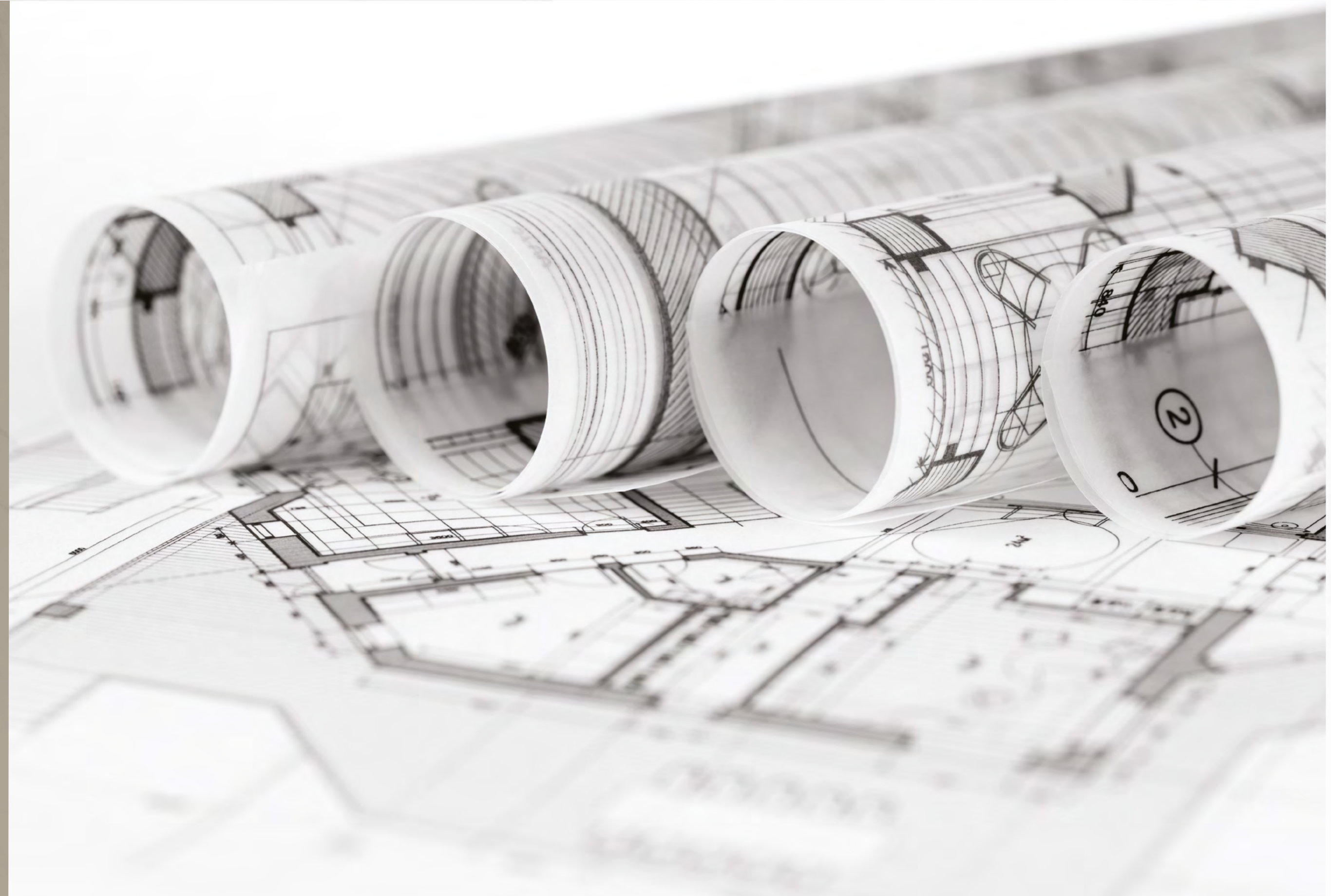




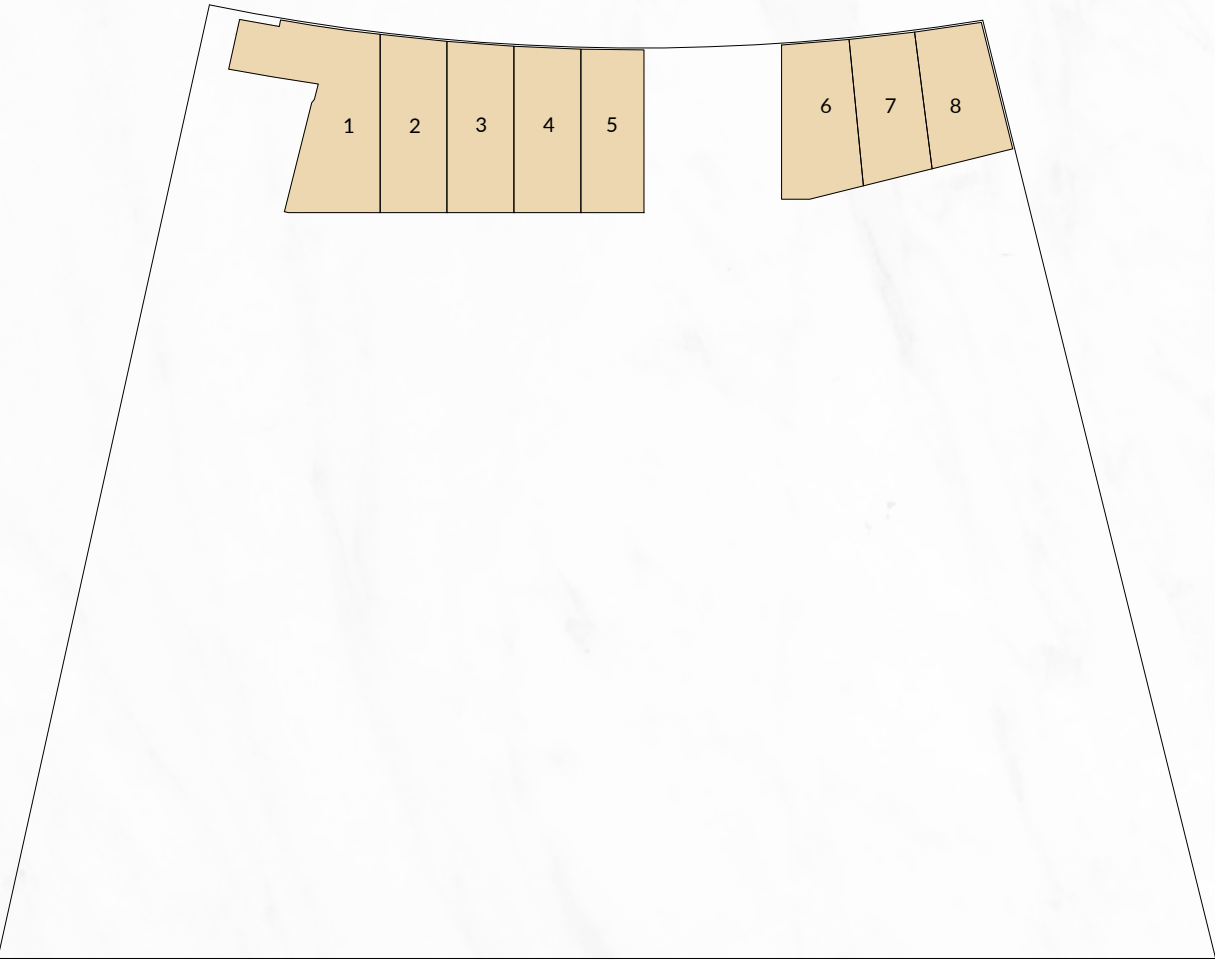
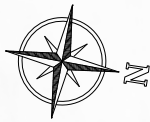
DESIGNED FOR YOUR CONVENIENCE
مصمم لراحتك

Drawings are provided by our consultants. All dimensions, features and amenities are approximate at time of printing. Actual area may vary from stated area. Drawings not to scale E&OE. The developer reserves the right to make revisions to the floor plans and any features, materials and dimensions mentioned without further notice.

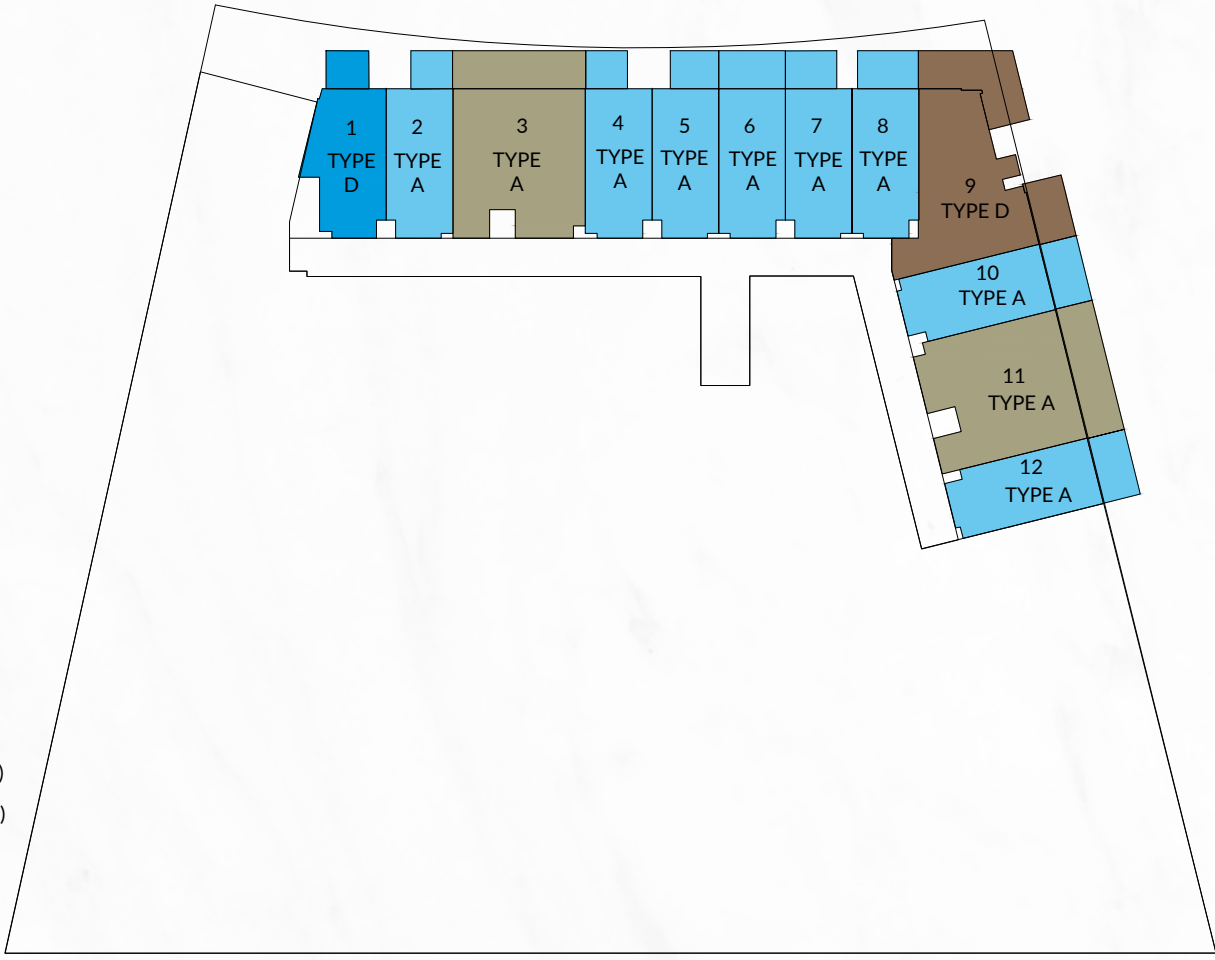
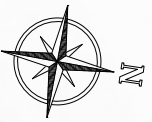
FLOOR PLANS & UNIT TYPES.



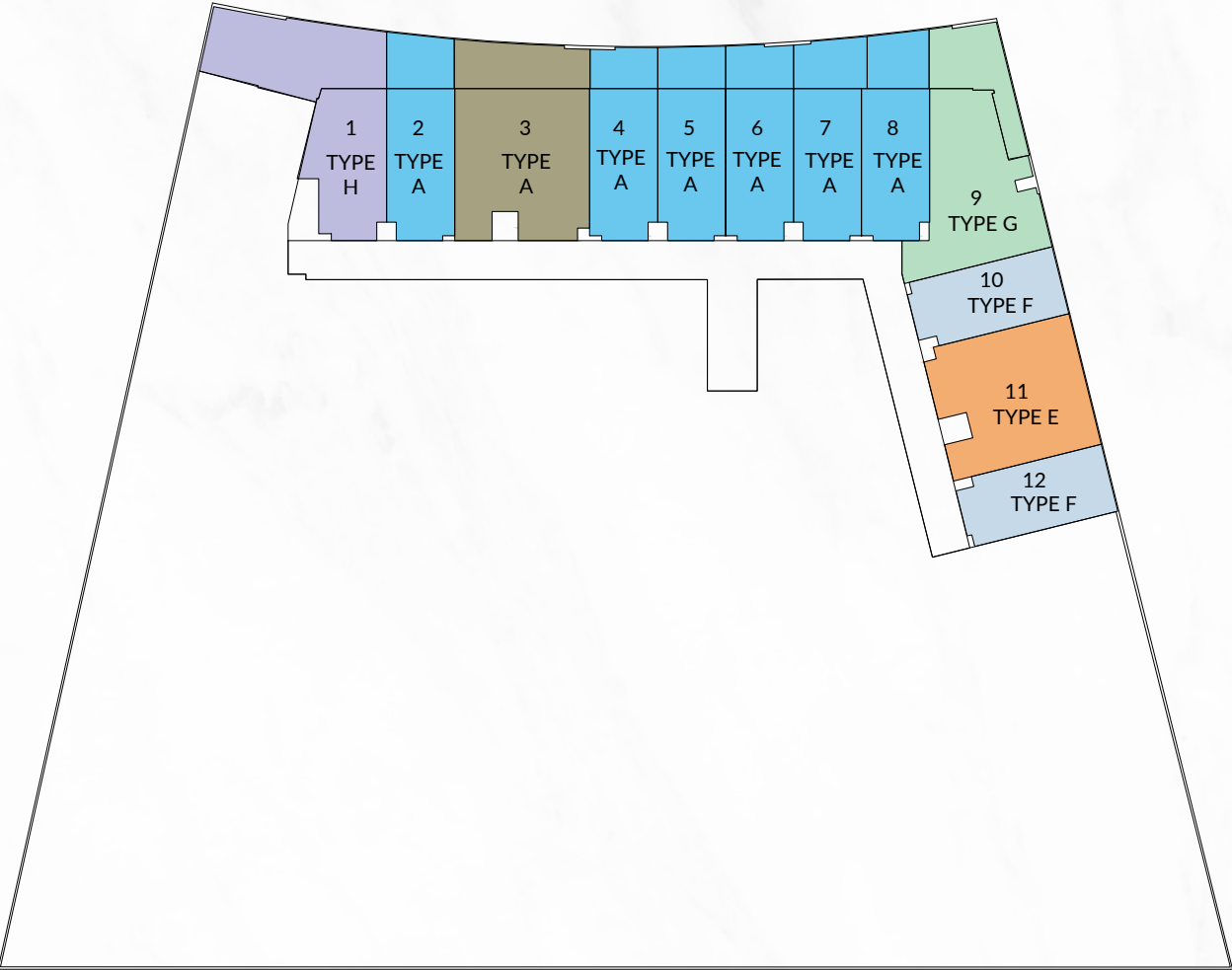
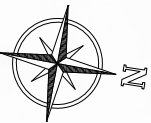
PLOT NO. DJA27, JABEL ALI - DUBAI, UAE.



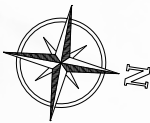
GROUND FLOOR PLAN



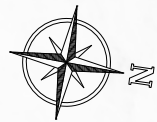
2nd & 3rd FLOOR PLANS



1st FLOOR PLAN

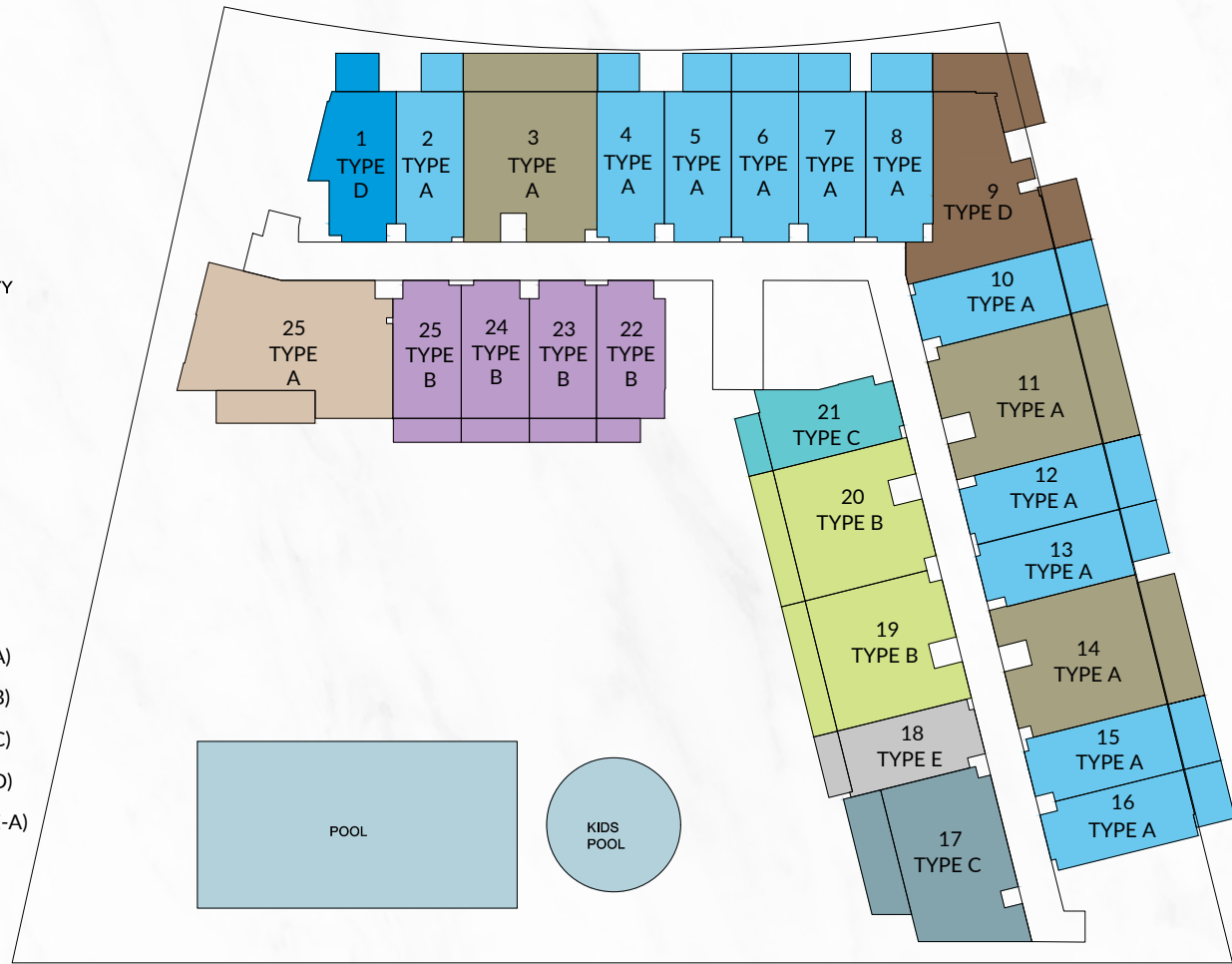


4th FLOOR PLAN

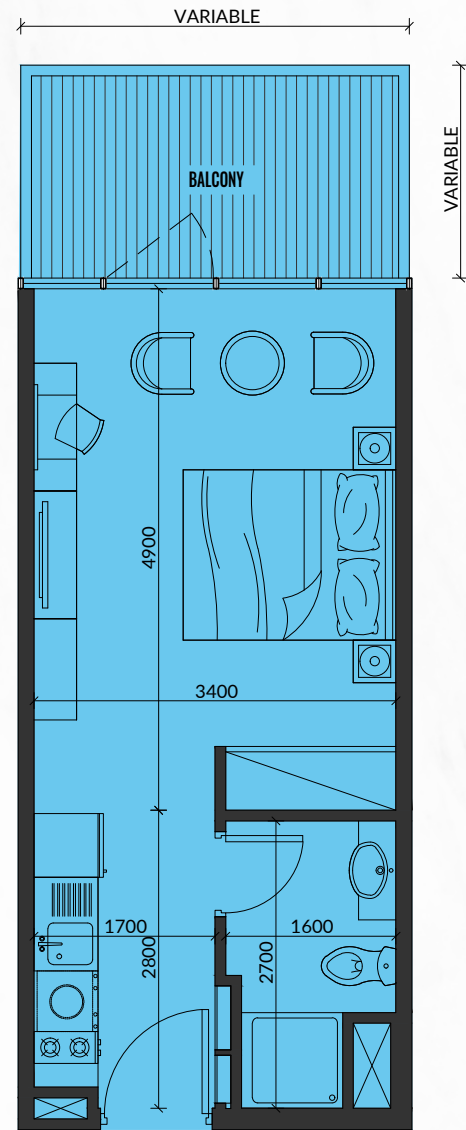


LEGEND

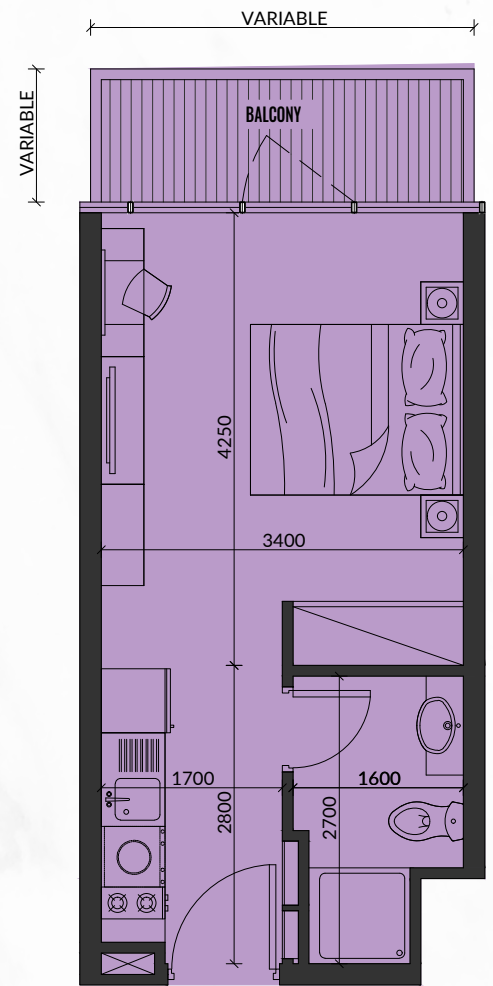
- STUDIO (TYPE-A)
- STUDIO (TYPE-B)
- STUDIO (TYPE-C)
- STUDIO (TYPE-D)
- STUDIO (TYPE-E)
- ONE BEDROOM (TYPE-A)
- ONE BEDROOM (TYPE-B)
- ONE BEDROOM (TYPE-C)
- ONE BEDROOM (TYPE-D)
- TWO BEDROOMS (TYPE-A)
- POOL



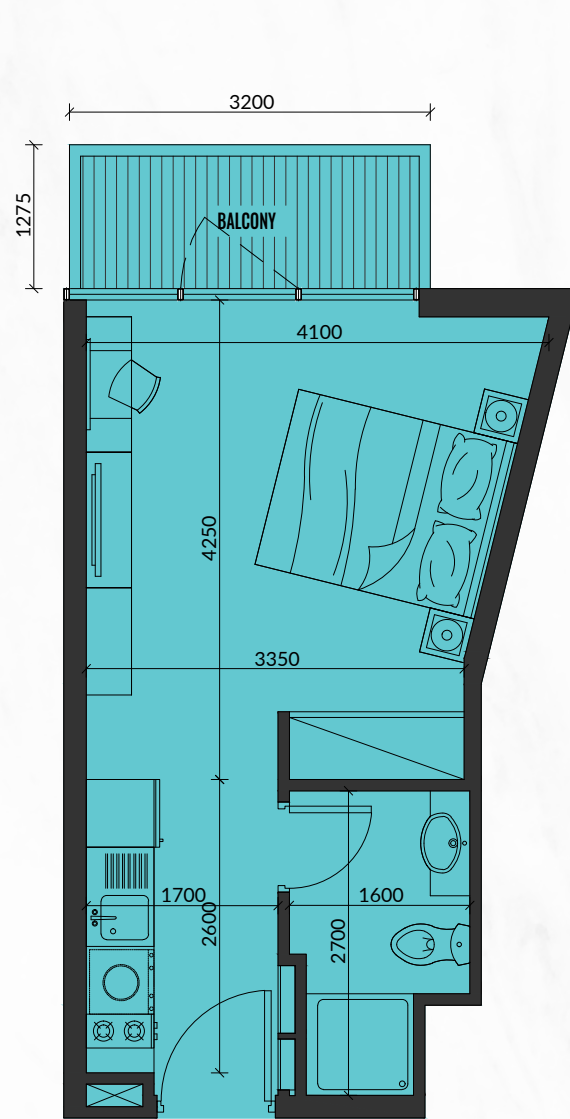
TYPICAL FLOOR PLAN (5th TO 16th)



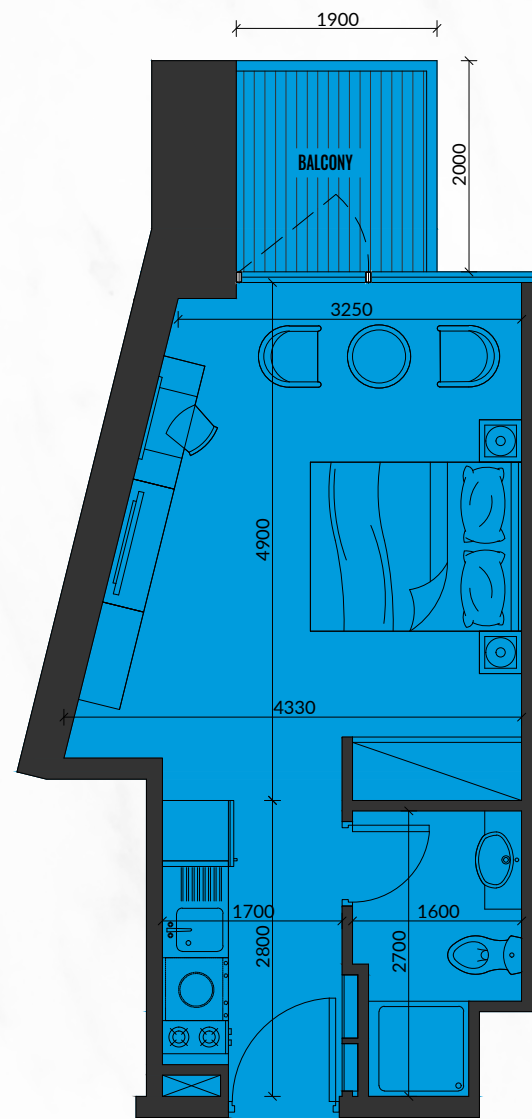
STUDIO TYPE-A



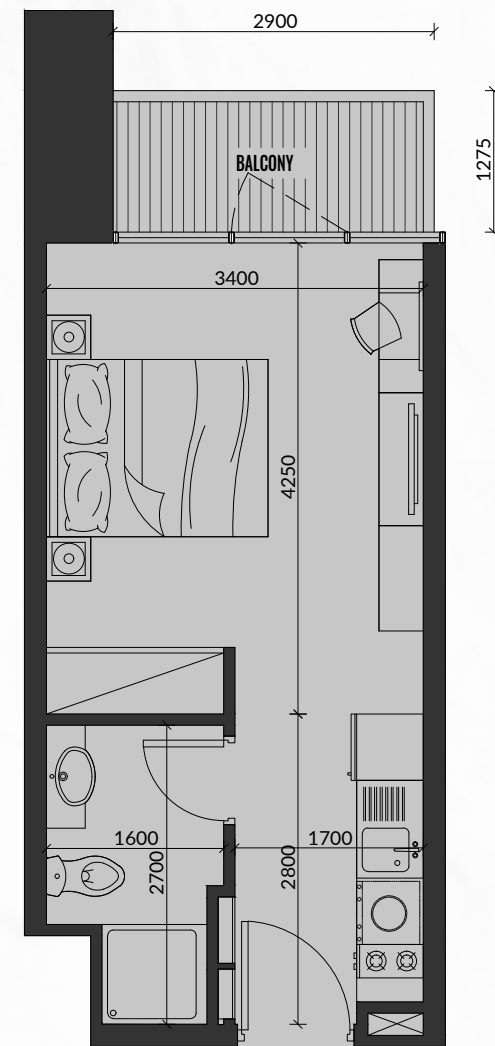
STUDIO TYPE-B



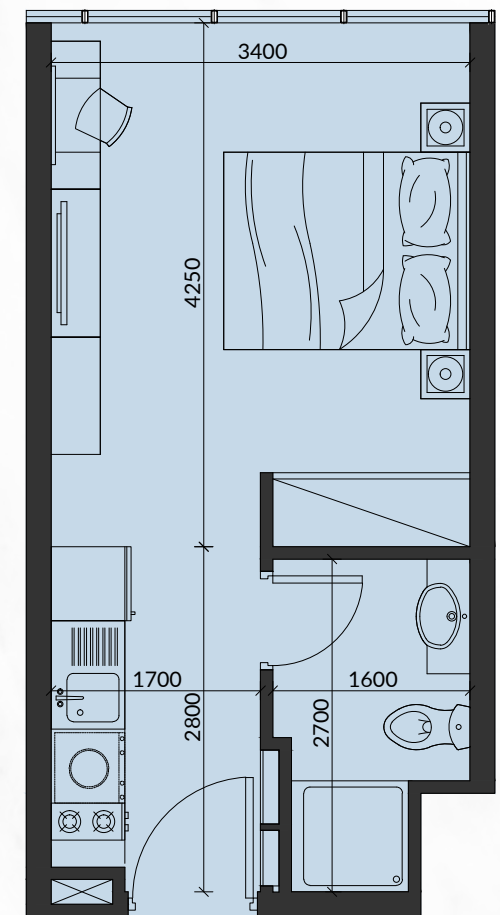
STUDIO TYPE-C



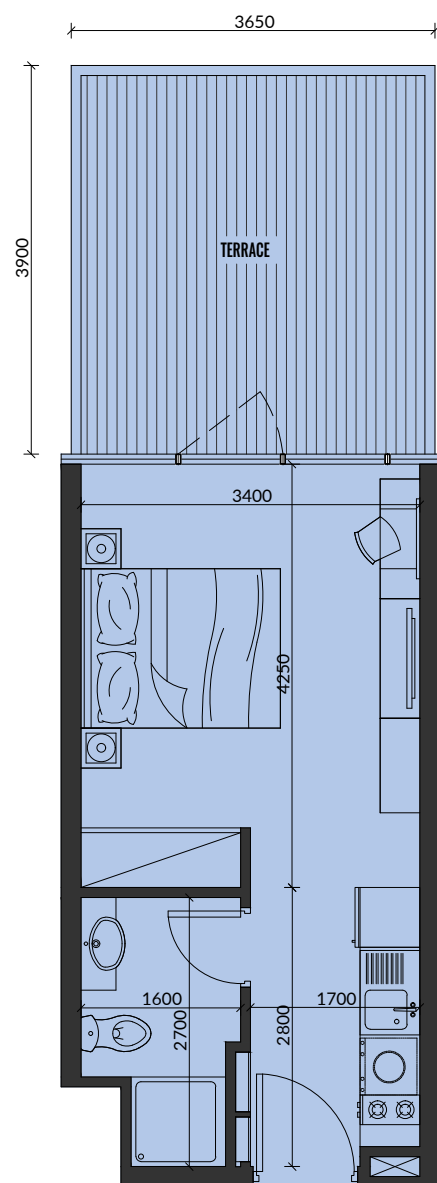
STUDIO TYPE-D



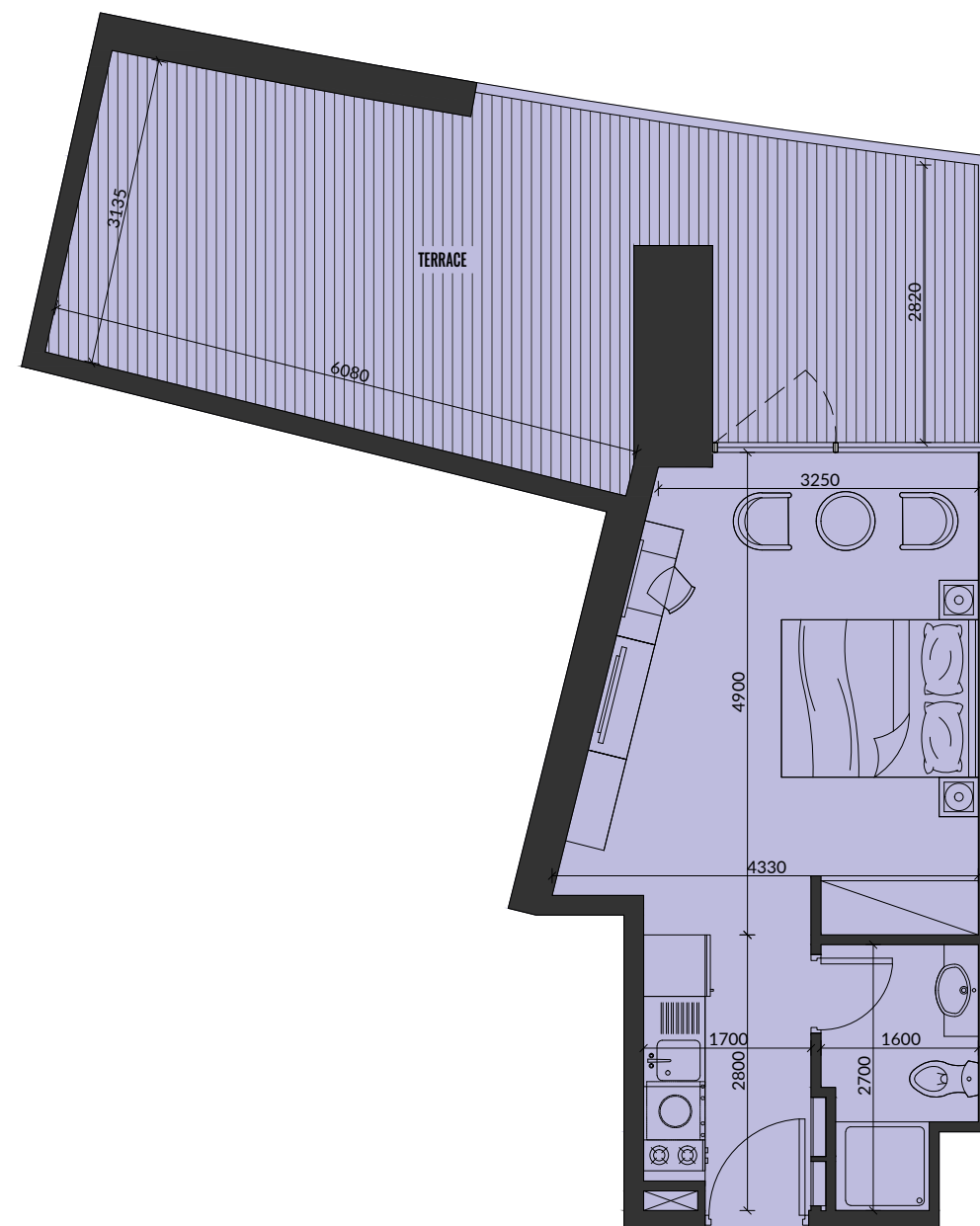
STUDIO TYPE-E



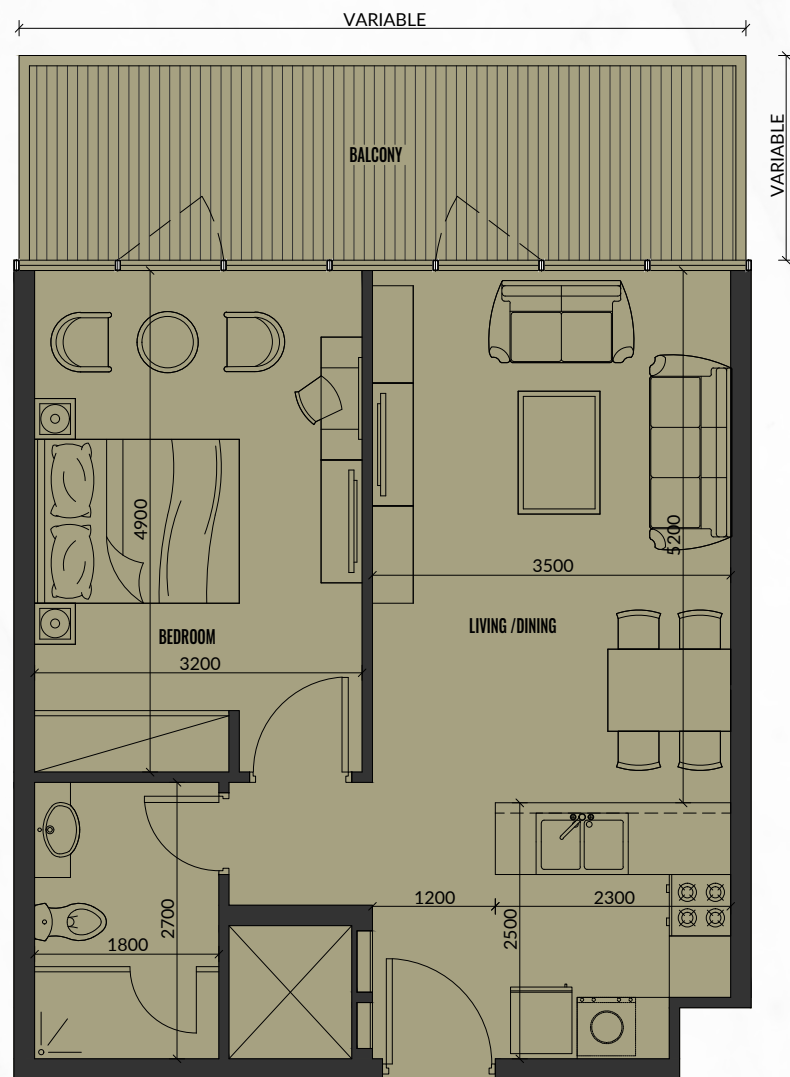
STUDIO TYPE-F



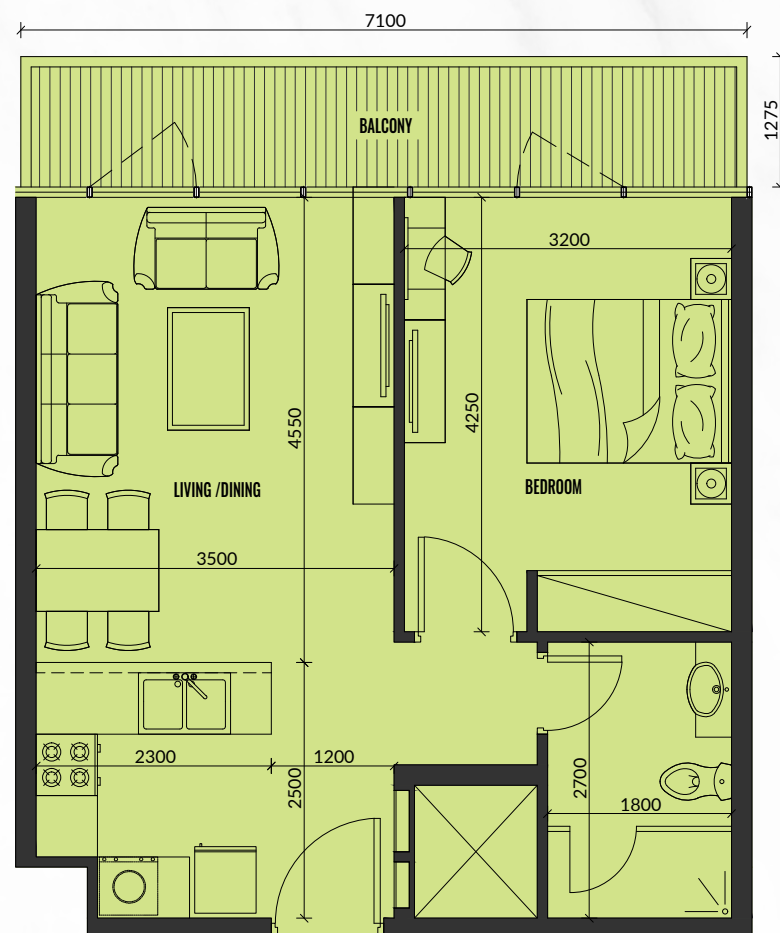
STUDIO TYPE-G



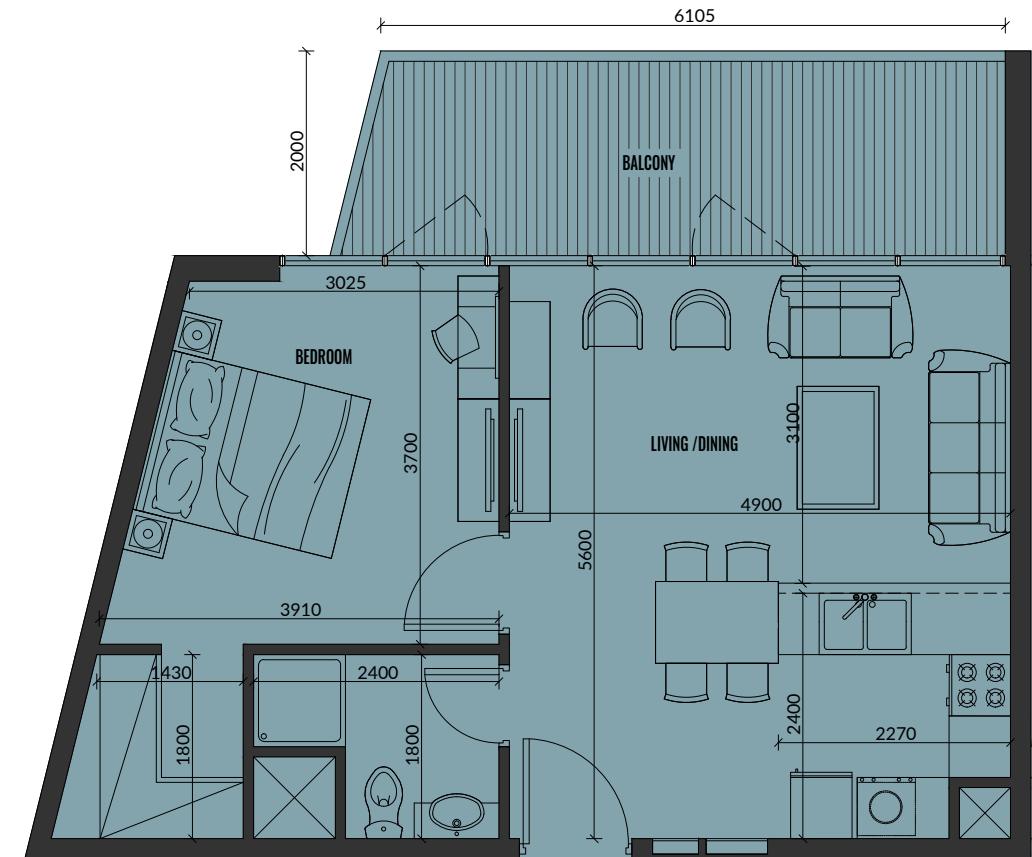
STUDIO TYPE-H



ONE BEDROOM TYPE-A



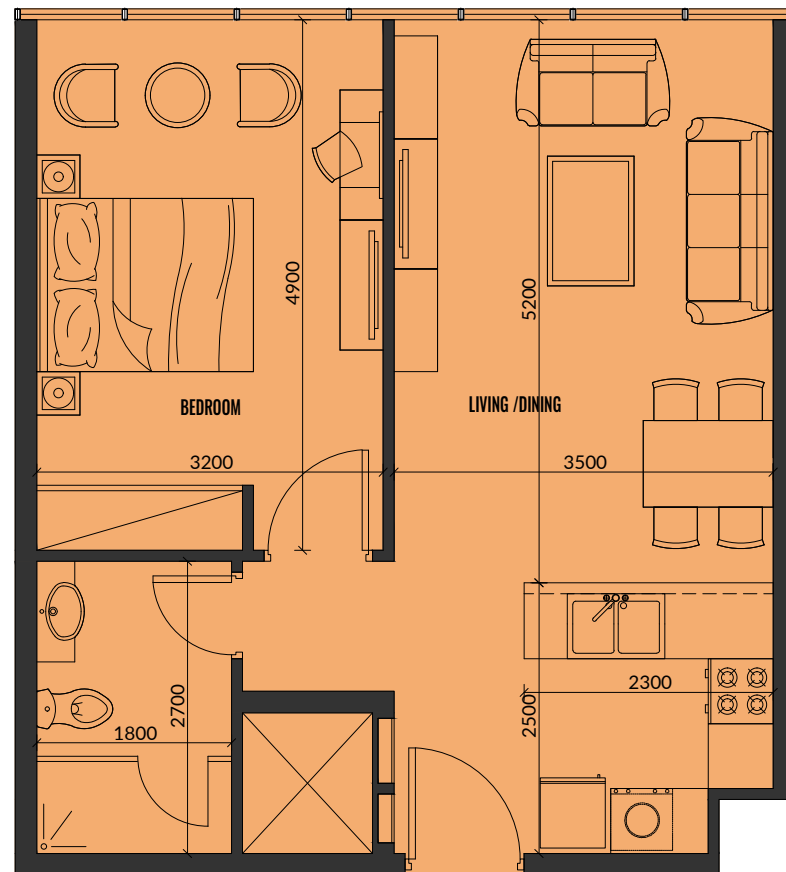
ONE BEDROOM TYPE-B



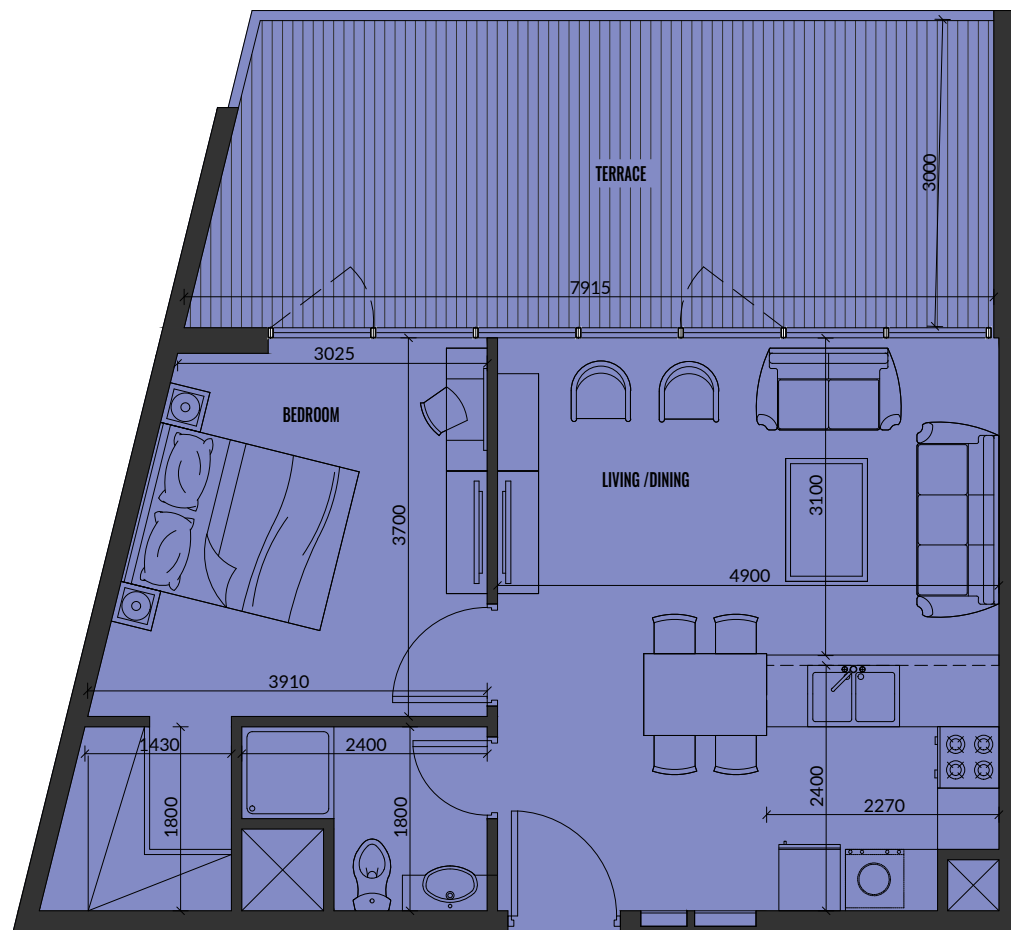
ONE BEDROOM TYPE-C



ONE BEDROOM TYPE-D



ONE BEDROOM TYPE-E



ONE BEDROOM TYPE-F



ONE BEDROOM TYPE-G



TWO BEDROOM TYPE-A



TWO BEDROOM TYPE-B



Legal Disclaimer:

The information contained in this brochure is confidential and is for the exclusive use of the recipient. This brochure may not be reproduced, distributed, delivered, or furnished to any person without the prior written approval of Reporatge Properties. No representation or warranty (expressed or implied) is made or can be given with respect to the accuracy or completeness of the information herein, or that any future offer of units or apartments in the project will conform to the terms described herein. Nothing in this leaflet should be constructed as financial, legal, tax or regulatory advice. All accessories such as electronics, furniture, white goods, decorative elements and so forth included in this leaflet are not part of the standard unit and used for illustration purposes only. All plans, layouts, pictures, renderings, information and details included in this leaflet are indicative only and may change at any time up to the final 'as built' status in accordance with final designs of the project and regulatory approvals and planning permissions.

ريپورتاج العقارية

Reportage.
Properties

Abu Dhabi | Head Office

Tamouh Tower
27th Floor, Al Reem Island
P.O. Box: 111949
United Arab Emirates
Phone: +971 2 204 3300
info@reportageuae.com

Dubai Office

Obero Centre
3rd Floor, Business Bay
P.O. Box: 27446
United Arab Emirates
Phone: +971 4 240 5556
info@reportageuae.com

Escrow Account Details

Plot No.: DJA27
Project No.: 2187
Account Title: Alexis Tower
Account No.: 994000005760
Bank: ARAIB

For more information, visit reportageuae.com
or call 800 7755 2 | +971 50 244 1078



R.