

Harrington
HOUSE



Invest in a Brilliant Future

Dubai is the vibrant heart of the UAE, pulsating with innovative progress. Entirely dedicated to the happiness and health of its residents, the UAE is a model of calm and tolerance in the Middle East.

Dubai's cosmopolitan buzz is at the essence of its personality. The city is infused with the cultures and colours of its spectrum of residents, where over 200 nationalities live and work in productive harmony with Emiratis in their beloved home, and where new world innovations are introduced on a daily basis to make living as progressive as it is convenient.

Building Homes That Inspire

At Ellington Properties, we are a boutique property developer that values functionality as much as aesthetics. We believe in creating spaces that enable people to live better lives, which is why we craft homes with meticulous attention to every last detail.



Downtown Dubai



DT I was designed to strike a chord among individuals who consider art, innovation and refinement integral to their lives. Awarded by the Arabian Property Awards as the 'Best Residential High-Rise' in Dubai, for 3 years in a row.

Jumeirah Village Circle

BELGRAVIA

Classic styling and contemporary design made Belgravia a huge success in JVC. The community also includes 100,000 square feet of stunning landscaped areas.

BELGRAVIA II

With ample spaces to connect, share and grow, Belgravia II offers a mix of spacious townhouses, 1, 2 and 3 bedroom apartments and studios.

BELGRAVIA III

A uniquely designed community, Belgravia III offers studios, 1 and 2 bedroom houses that are high in demand. The impressive amenities make this community a favorite among buyers.

BELGRAVIA HEIGHTS I

Explore seamless architecture with a contemporary design palette at Belgravia Heights I featuring bespoke studios, 1 and 2 bedroom apartments

EATON PLACE

Created with community living in mind, Eaton Place encompasses a collection of studio, 1 and 2 bedroom apartments, all overlooking a resort-style pool and courtyard.

SOMERSET MEWS

Enjoy exquisite community living at Somerset Mews. Explore spacious 4 bedroom townhouses, designed in true contemporary fashion.

THE SLOANE

by BELGRAVIA HEIGHTS

The Sloane by Belgravia Heights is a Miami-inspired residential tower with coastal vibes. It offers studios, 1 and 2 bedroom apartments with resort-like amenities.

Mohammed Bin Rashid City

W I L T O N

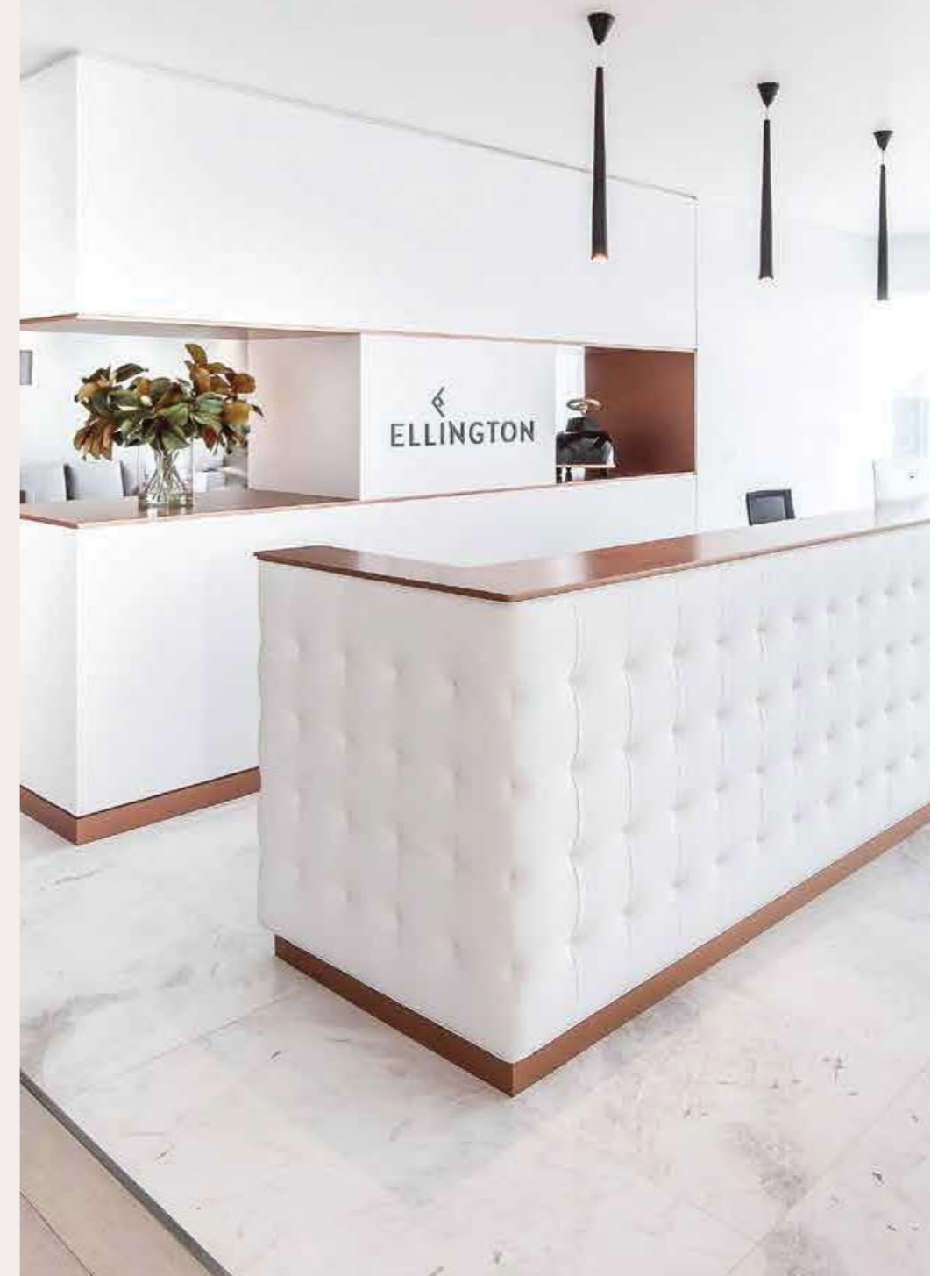
— TERRACES —

Wilton Terraces are a two 12-storeyed towers located against a beautiful lush backdrop of MBR City. The development comprises of bespoke 1 and 2 bedroom residences.

WILTON PARK RESIDENCES

Wilton Park Residences features Studio, 1 & 2 bedroom apartments. The community is set in a family friendly neighbourhood and surrounded by lush green parks.

Setting New Standards Across Dubai



Live in Design

Ellington homes are designed to inspire. Our vision is to create living spaces that add value and contentment every day, supporting people as they journey towards their dreams and aspirations. Built in thoughtfully selected locations to ensure superb long-term return on investment, Ellington properties are famed for their resort-style pool courtyards, astounding landscaping, comprehensive fitness and child play facilities, and tailored interiors.

Along with luxurious communities in prestigious districts such as Downtown Dubai and Palm Jumeirah, Ellington's Dubai properties include elegant and serene residences such as Harrington House, located in the exuberant young neighbourhood of Jumeirah Village Circle.

From design to delivery, our team curates every aspect of the construction, ensuring that we continue to meet our promise and commit to our long-term responsibility to our customers.

SOLD OUT
HANDOVER - 2017



Belgravia

Cool, clean, and classic. Belgravia offers residents serenity and style in the heart of the emirate, bordered by Al Khail Road and Emirates Highway and a quick trip from Downtown Dubai, the Marina, and JLT.



181 modern one, two, and three bedroom units sit on a beautifully landscaped 100,000 square feet of land, complete with a swimming pool, a children's play area, sports fields, parks, and schools. Each gorgeous home is crafted with individual care and strikes a tasteful balance between classic elegance and cutting-edge design and integration.

Belgravia II

Belgravia II is a uniquely designed and well detailed residential building in the heart of Jumeirah Village Circle, Dubai. Created with community living in mind, Belgravia II offers residents ample space to connect, share and grow.

Behind the bold contemporary exterior façade is a mix of 188 spacious townhouses and studios, 1, 2 and 3 bedroom apartments. Each gorgeous home is crafted with individual care and strikes a tasteful balance between classic elegance and cutting-edge design and integration.



SOLD OUT
HANDOVER - 2019



Eaton Place

Eaton Place interiors are soft and serene. The concept is a play on pastel neutrals pulled from the tonalities of a desert rose. On trend and effortless, this color scheme is sophisticated and fashion forward.



Wood effect beige porcelain tiles provide texture and warmth to the floors while the mushroom tone joinery comes to life against white marble effect sintered stone counter tops and mirrored splashbacks. Taupe porcelain in the bathrooms creates a warm backdrop to white ceramics and subway tiles.

DT1

DT1 is in Downtown Dubai, one of Dubai's most attractive locations known for its luxurious and diverse offerings. The project had recently received the award for Best Luxury Project by Arabian Business as well as winning the Best Residential High-Rise Architecture and Highly Commended Architecture for Multiple Residences.

Ellington Properties created an outstandingly unique project within an exceptional environment where luxury is matched with ultimate premium designs.



SOLD OUT
HANDOVER - 2021



The Rebirth of the Desert

Warm, serene and vastly liberating, the desert has become a real source of light and life. The reimagining of its vast expanses of sand and natural wealth has transformed this once forgotten land into a haven of celebration and growth.

Its warm hues and fauna and flora are a great source of inspiration, infusing layers of movement, texture and colour to create its distinct fabric. Its vast tapestry stretches towards the horizon, grains of quartz sand floating in the breeze with the promise of new possibilities, adding vibrancy to an already lively tableau.

Earthy hues clash with the inky tones of starry night skies to offer a beautiful contrast that swiftly reflects the beauty and wealth of the sandy dunes and valleys.

The desert is the oasis.



10 Minutes
Dubai Marina



10 Minutes
Mall of the Emirates



10 Minutes
Downtown Dubai



15 Minutes
Palm Jumeirah



15 Minutes
Burj Al Arab



18 Minutes
The Walk - JBR



25 Minutes
Dubai International
Airport



28 Minutes
Dubai World Central
Airport

Arabian Gulf

Palm Jebel Ali

The World

Palm
Jumeirah

To Abu Dhabi

The Walk - JBR

Burj Al Arab

Jebel Ali Port

Dubai Marina

Emirates
Golf Club

Mall of the
Emirates

Downtown
Dubai

To Sharjah & Northern
Emirates

Dubai World
Central
Airport

Harrington
HOUSE

Dubai
International
Airport

Dubai
Autodrome

Community. Comfort. Luxury.

Home to eight of Ellington Properties' most revered developments, Jumeirah Village Circle is one of our favourite locations. Strategically selected by our scouts, JVC is a fast-paced and vibrant residential hub that brings together happy families and single professionals in a joyous centre of attraction. The development is home to a slew of multipurpose facilities, a selection of delectable restaurants and eateries, and a spectrum of retail and leisure destinations.

JVC's proximity to Dubai's gorgeous beaches, legendary shopping and nightlife destinations, and business and commercial facilities make it one of the most sought-after locations. Easily accessible through two of Dubai's main freeways, Al Khail Road and Sheikh Mohammed Bin Zayed Road, JVC lies in close proximity to the vibrant centre, but far enough to offer its residents a quiet shelter from the hustle and bustle of the city.

THE SLOANE BY BELGRAVIA HEIGHTS

BELGRAVIA HEIGHTS I

BELGRAVIA

BELGRAVIA II

BELGRAVIA SQUARE

Harrington
HOUSE

SOMERSET MEWS

BELGRAVIA III

EATON PLACE

Petrol Station

Circle Mall

Petrol Station

JSS International
School

Al Khail Road

Sheikh Mohammed Bin Zayed Road



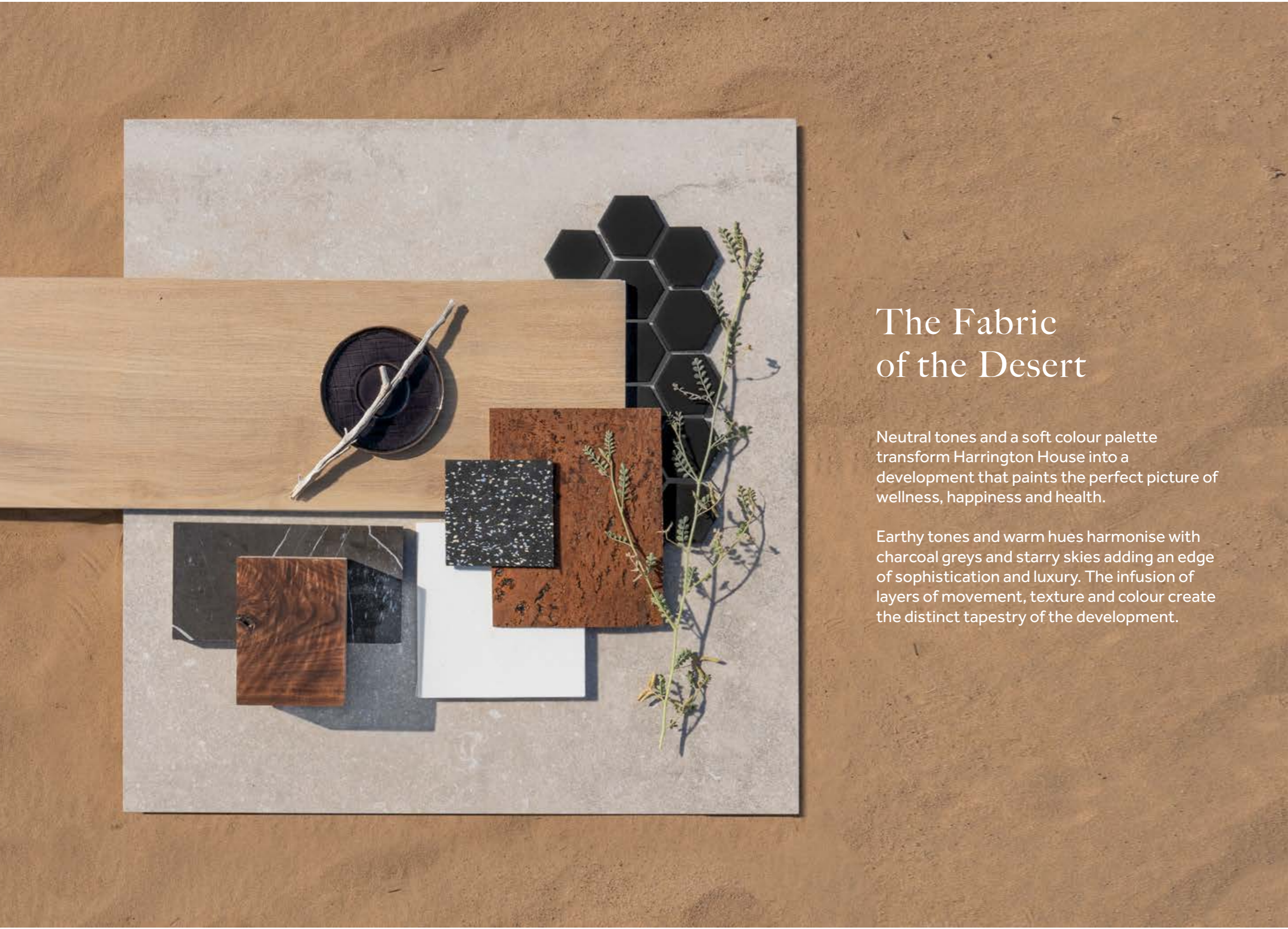
Welcome to Harrington House



Light.
Life.
Growth.

Inspired by the breath-taking Arabian Desert and its natural wealth, Harrington House embodies a holistic and balanced approach to urban living, through a slew of interwoven elements that cater to a happy and healthy lifestyle.






The Fabric of the Desert

Neutral tones and a soft colour palette transform Harrington House into a development that paints the perfect picture of wellness, happiness and health.

Earthy tones and warm hues harmonise with charcoal greys and starry skies adding an edge of sophistication and luxury. The infusion of layers of movement, texture and colour create the distinct tapestry of the development.

A photograph of a family of three in a living room. A woman with long brown hair, wearing a white top, is leaning over a man with a beard and a light blue shirt. A young girl with long brown hair and a white top is sitting on the man's shoulders. They are all smiling and laughing. The background shows a light-colored sofa with blue and white pillows, and a window with a plant in the background.

The triad of growth, light and life are prevalent in Harrington House, supporting another more important triad: That of small families looking to nurture their unit and grow and blossom within the development. This beautiful triad sits at the centre of our concept, with every element in Harrington House created to cater to the spiritual and physical needs of our residents.



The Tapestry of Life

Harrington House's vast lobby sets the tone for the entire development as it welcomes its residents and visitors. The high ceilings and natural, raw furniture create an immediate harmony and ode to nature. The lobby's cosy lounge seats, workspace and seasonal decorations create a spirit of community from the very first moment.

Elegant, handcrafted art decorates the property, reflecting the textures and raw beauty of the Arabian landscape, while the architecture, landscape and interiors all tie together to echo the inherent charm and comfort of Ellington Properties' developments.





Painting the Journey of a Lifetime

Home to 92 ambient and breath-taking residential units, Harrington House's unique design and excellent location add another layer of perfection to an already outstanding residential project.

The development's architecture is as dramatic as it is impressive, yet perfectly suited to welcome small and growing families.

Ground Floor Amenities Plan

- A Main Lobby
- B Courtyard
- C Green Wall
- D Courtyard Seating Area
- E Zen Garden
- F Feature Staircase



First Floor Amenities Plan

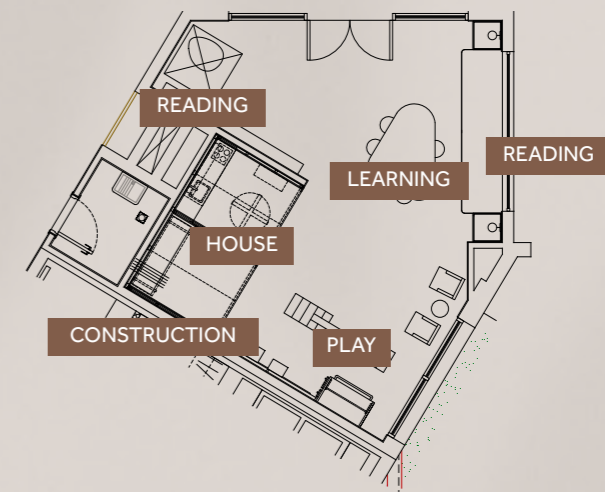


- A Indoor Kids Play Area
- B Outdoor Kids Play Area
- C Bathroom for People of Determination and Baby Changing Station
- D Changing Room with Steam Shower
- E Fitness Studio
- F Outdoor Showers
- G Swimming Pool
- H Baja Shelf
- I Water Fountains
- J Outdoor BBQ Area with Kitchen Facilities
- K Shaded Seating Area
- L Sun Loungers



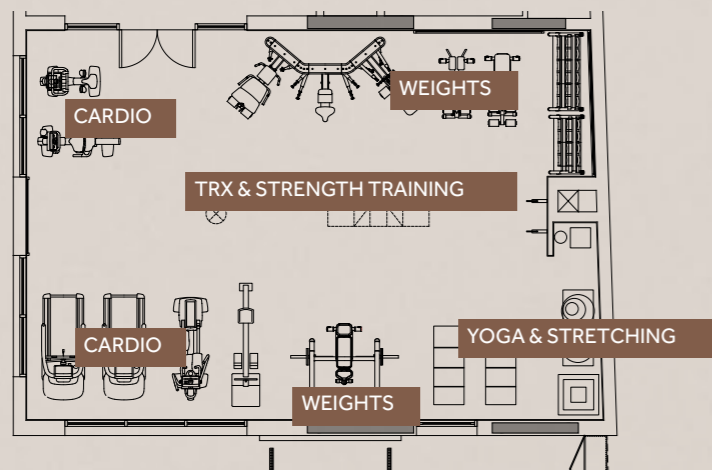
Breathing Life Into Every Element

A vibrant children's playroom, serving as a holistic and sustainable space that encourages early development and better cognition which inspires kids to create and explore.

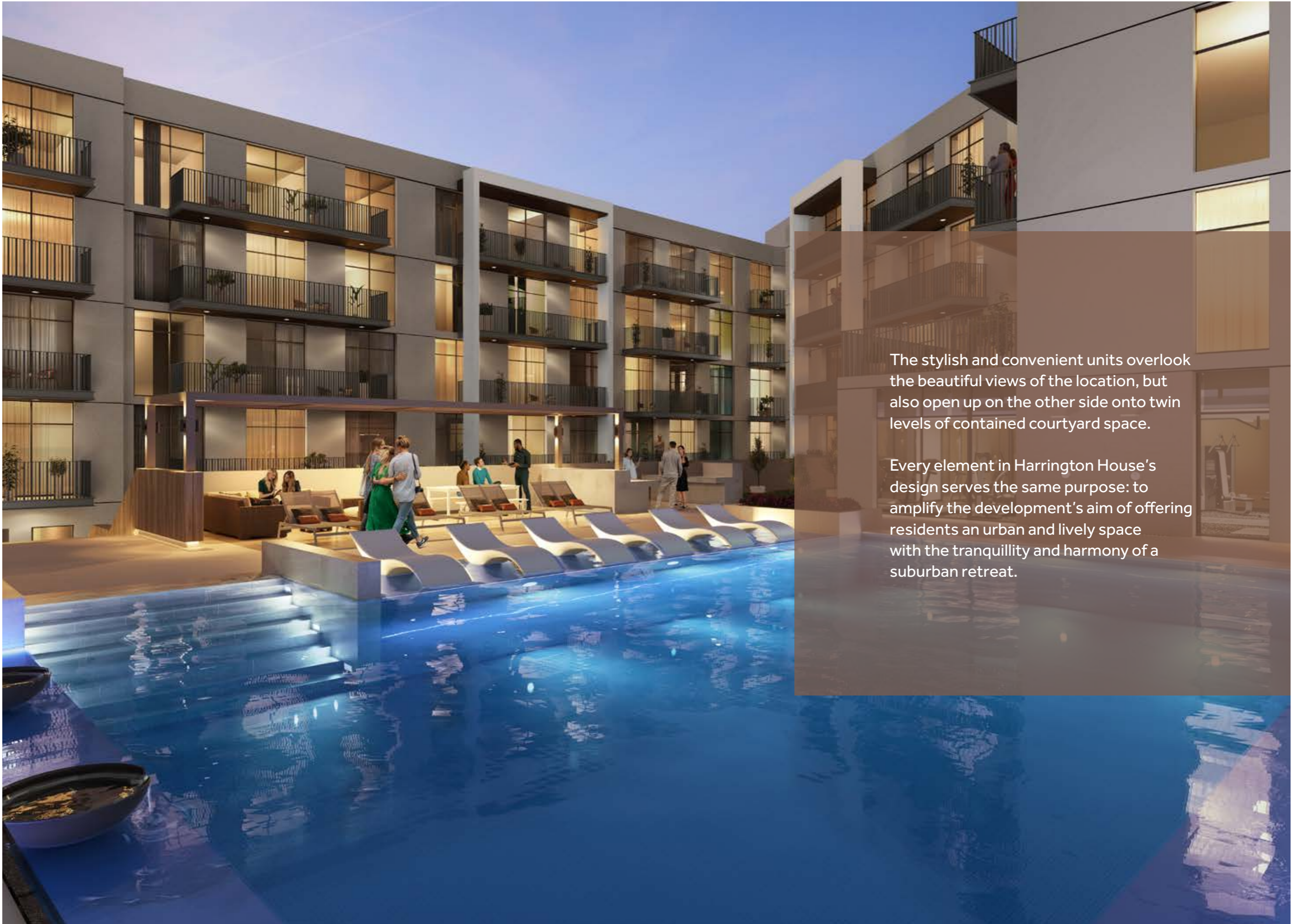




To cater to active lifestyles, Harrington House is home to a Fitness Studio with natural light and a strong, motivating décor. The bold colour palette contrasts with the soft and durable flooring and acoustic treatments to offer a fully outfitted space.







The stylish and convenient units overlook the beautiful views of the location, but also open up on the other side onto twin levels of contained courtyard space.

Every element in Harrington House's design serves the same purpose: to amplify the development's aim of offering residents an urban and lively space with the tranquillity and harmony of a suburban retreat.

Perfectly Balanced

The lower courtyard opens up on a Zen garden and a feature green wall with ample seating area. The serene multi-faceted area serves to cater to residents' needs and offer a pleasant backdrop to outdoor community activities.







The True Makings of a Home

Every detail of Harrington House's design is perfected to provide our residents with a picturesque home that encourages growth and offers the utmost comfort and convenience.

Elements such as high ceilings, sculpted balconies and landscaped courtyards offer ample space and plenty of natural light to encourage productivity and nurture a holistic, healthy and active lifestyle.

The open kitchen is as functional as it is aesthetic, with ample storage space, built-in appliances and a closed pantry. Ergonomically designed to maximize productivity, the kitchen is equipped with signature tip-out trays under the sink, a stacked microwave and oven, and a functional bar. Black mosaic wall tiles and durable sintered stone countertops complete the picture, creating a space that is a feast for the senses.



The contrast of soft and bold is ever-present in the powder rooms, with wall mosaics and decorative shelves complementing signature chrome mixers and plenty of storage space.





The earthy hues and serene theme permeate the bedroom, with every detail of the design carefully selected to offer a most convenient living experience. The wardrobes' custom beige interiors and wood laminate door panels are complemented with statement brushed stainless steel handles.



The units' main bathroom is designed to complement and support modern day living routines, featuring plenty of storage space for large and small items, littered rails and hangers, and a walk-in shower with a glass door.

The design is enhanced with bold black ceramic mosaic floors, a stone threshold to stop any water overflow, and easy to clean crisp white wall tiles.

A woman with long brown hair is lying on a wicker lounge chair with blue cushions. She is wearing a white top and has her arms raised behind her head, smiling broadly. The background shows a blurred outdoor setting with palm trees and a glass structure.

**TO DISCUSS INVESTMENT OPPORTUNITIES, PLEASE
CONTACT US:**

Phone: +971 4 278 0888

Email: info@ellingtongroup.com

www.ellingtonproperties.ae

16th & 17th Floor, Burlington Tower, Business Bay, Dubai,
UAE, P.O. Box 117500

Project Number: 2277

Disclaimer: The renderings and visualizations contained in this brochure are provided for illustrative and marketing purposes. While the information provided is believed to be accurate and reliable at the time of printing, only the information contained in the final Sales and Purchase Agreement will have any legal effect.



LIVE IN *DESIGN*

ELLINGTONPROPERTIES.AE