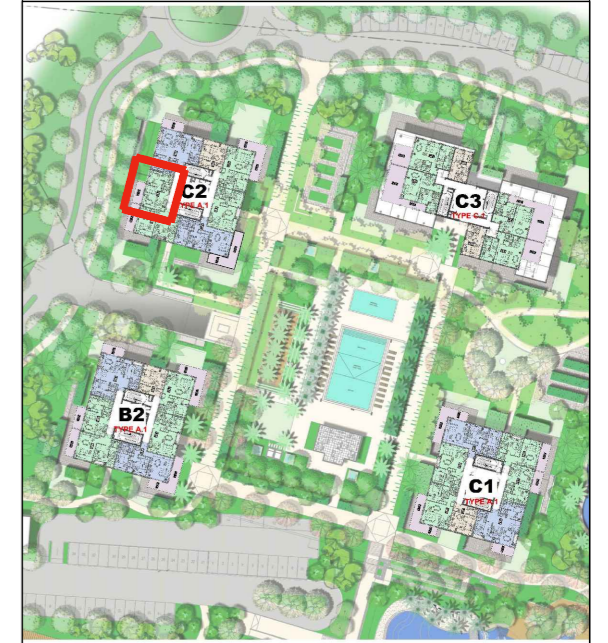


- C146
- C246
- B246

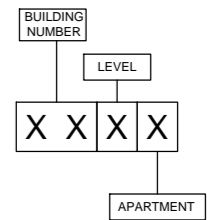
UNIT AREA = 659.93 sq.ft  
 TERRACE AREA = 156.51 sq.ft  
 TOTAL = 816.44 sq.ft

DO NOT SCALE

KEY



UNIT CODE



Disclaimer:  
 All dimensions are in millimeter.  
 This drawing is for illustrative purposes only and shall not be considered as exact scale replicas of the final product. The actual unit may have slight variances in size and design.

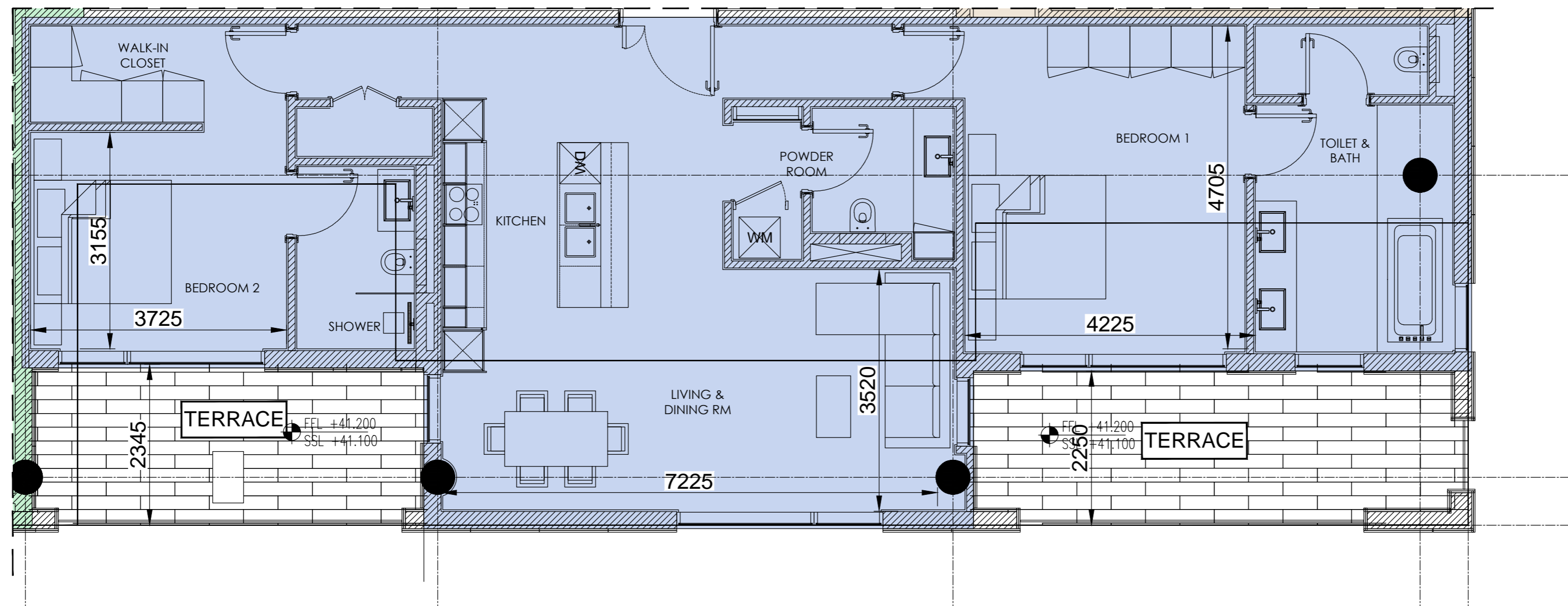


the neighbourhood  
 al barari

BUILDING - C2  
 LEVEL-04  
 1 BED APARTMENT

27.05.2018

REV : 0

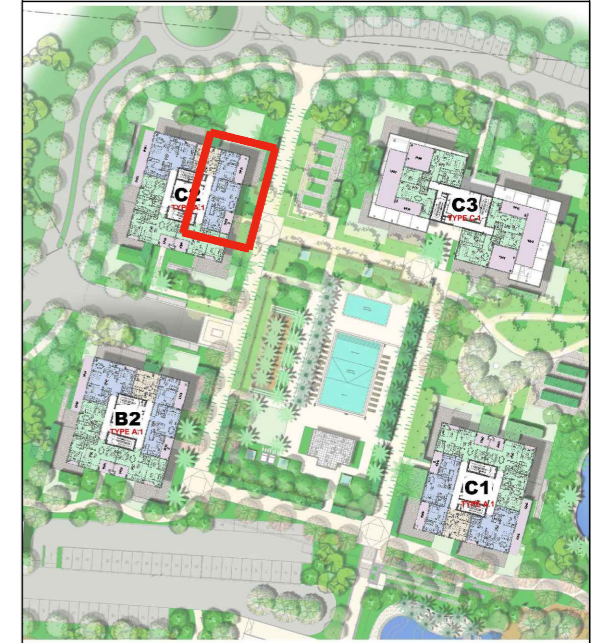


- C152
- C252
- B252

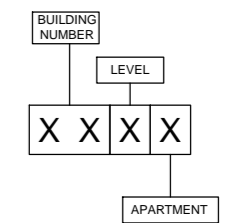
UNIT AREA = 1312.23 sq.ft  
 TERRACE AREA = 326.79 sq.ft  
 TOTAL = 1639.02 sq.ft

DO NOT SCALE

KEY



UNIT CODE



Disclaimer:  
 All dimensions are in millimeter.  
 This drawing is for illustrative purposes only and shall not be considered as exact scale replicas of the final product. The actual unit may have slight variances in size and design.

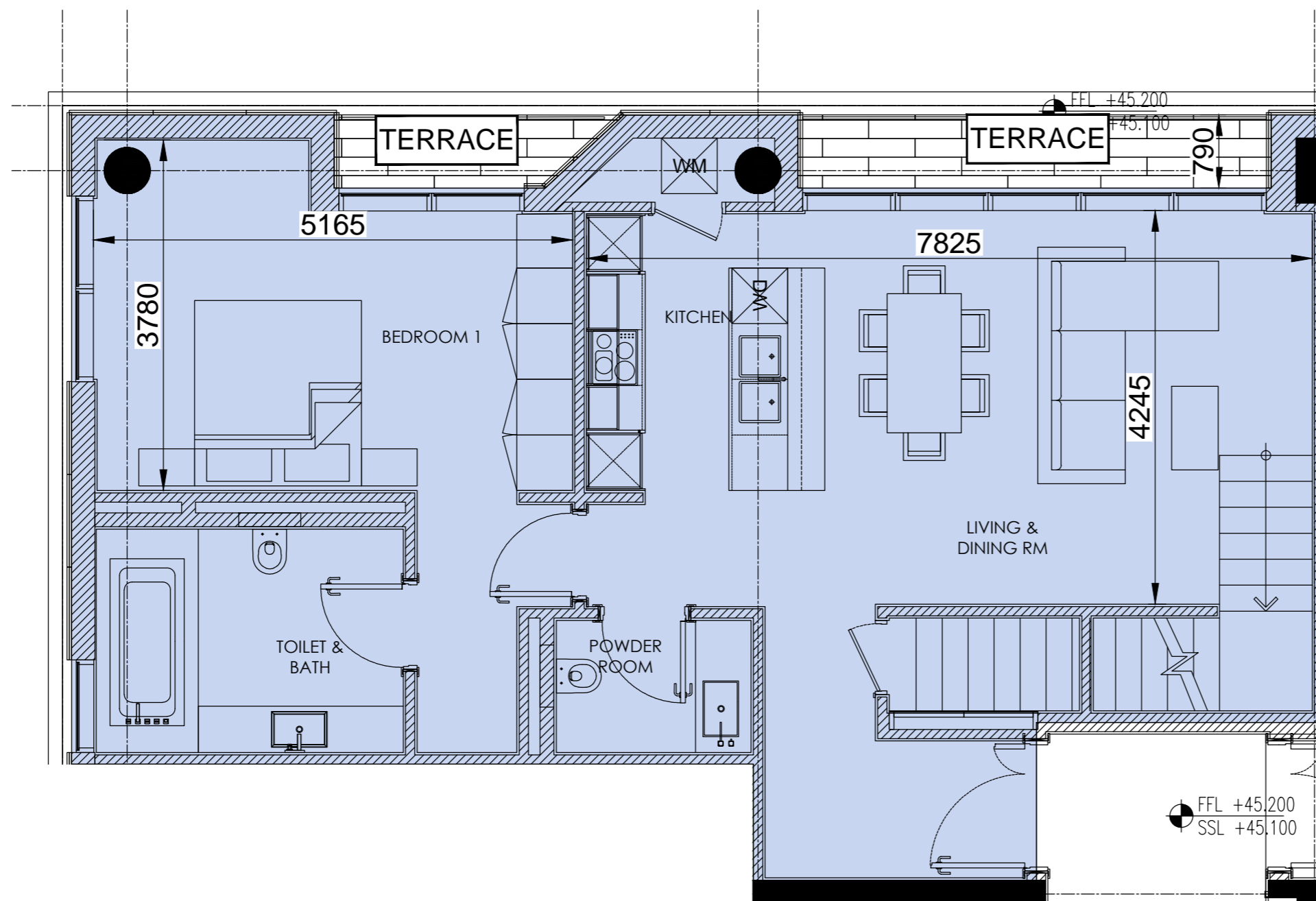


the neighbourhood  
 al barari

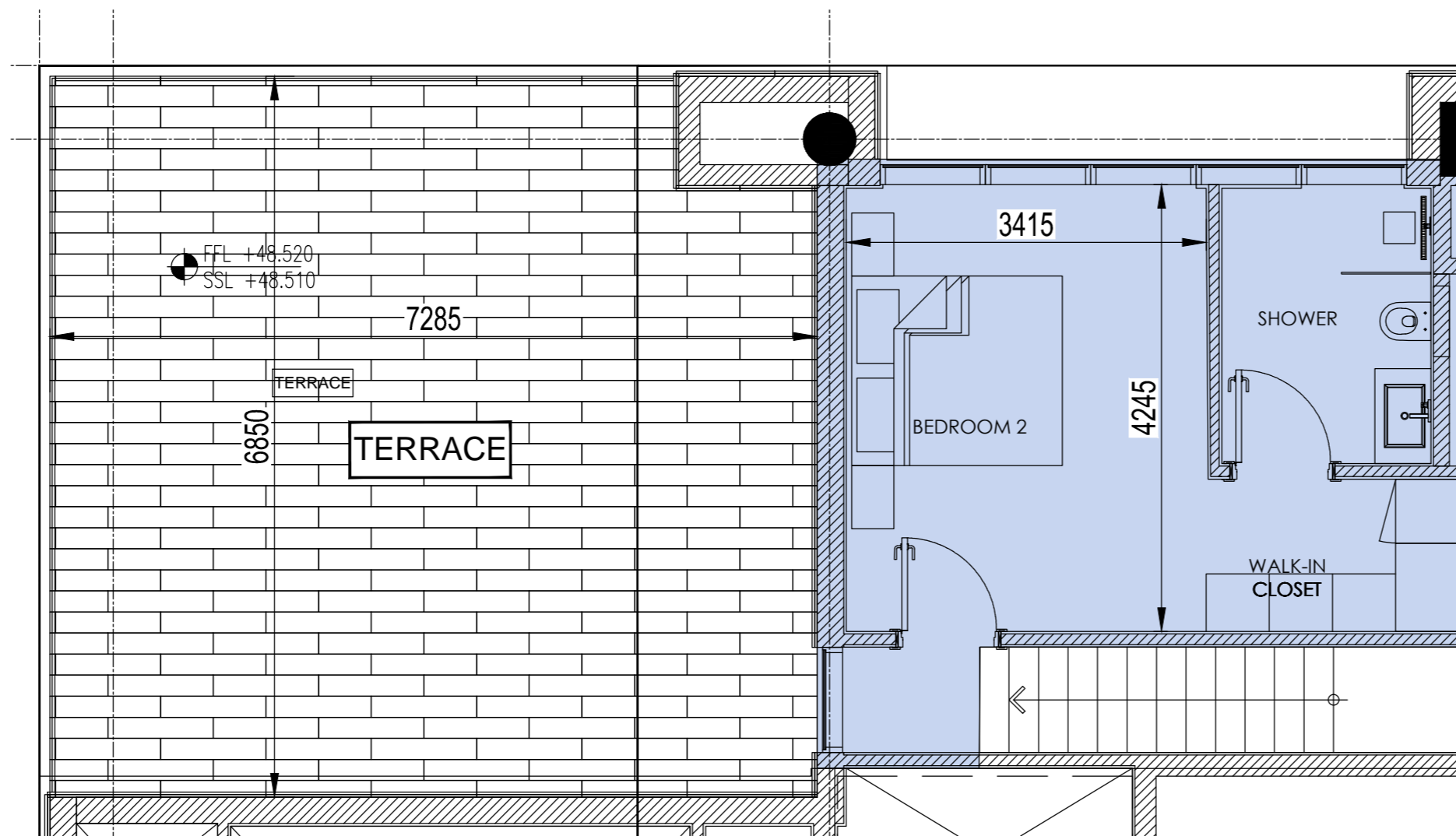
BUILDING - C2  
 LEVEL-05  
 2 BED APARTMENT

27.05.2018

REV : 0



LOWER LEVEL / LEVEL-6



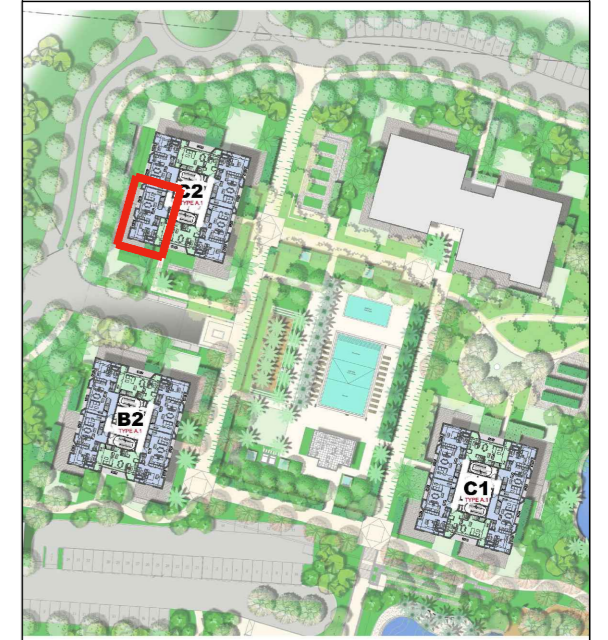
UPPER LEVEL / LEVEL-7

- C166
- C266
- B266

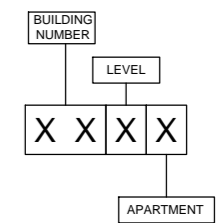
UNIT AREA = 1243.55 sq.ft  
 TERRACE AREA = 612.68 sq.ft  
 TOTAL = 1856.23 sq.ft

DO NOT SCALE

KEY



UNIT CODE



Disclaimer:  
 All dimensions are in millimeter.  
 This drawing is for illustrative purposes only and shall not be considered as exact scale replicas of the final product. The actual unit may have slight variances in size and design.



the neighbourhood  
 al barari

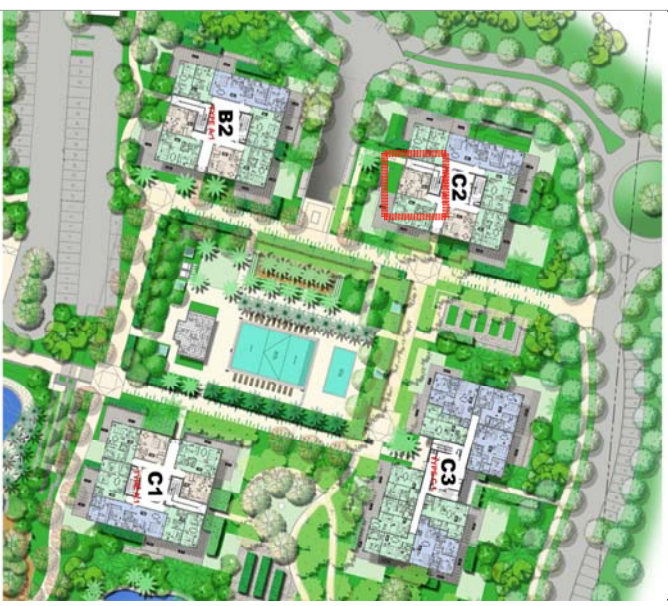
BUILDING - C2  
 LEVEL - 6 & 7  
 PENTHOUSE 2 BED DUPLEX

27.05.2018

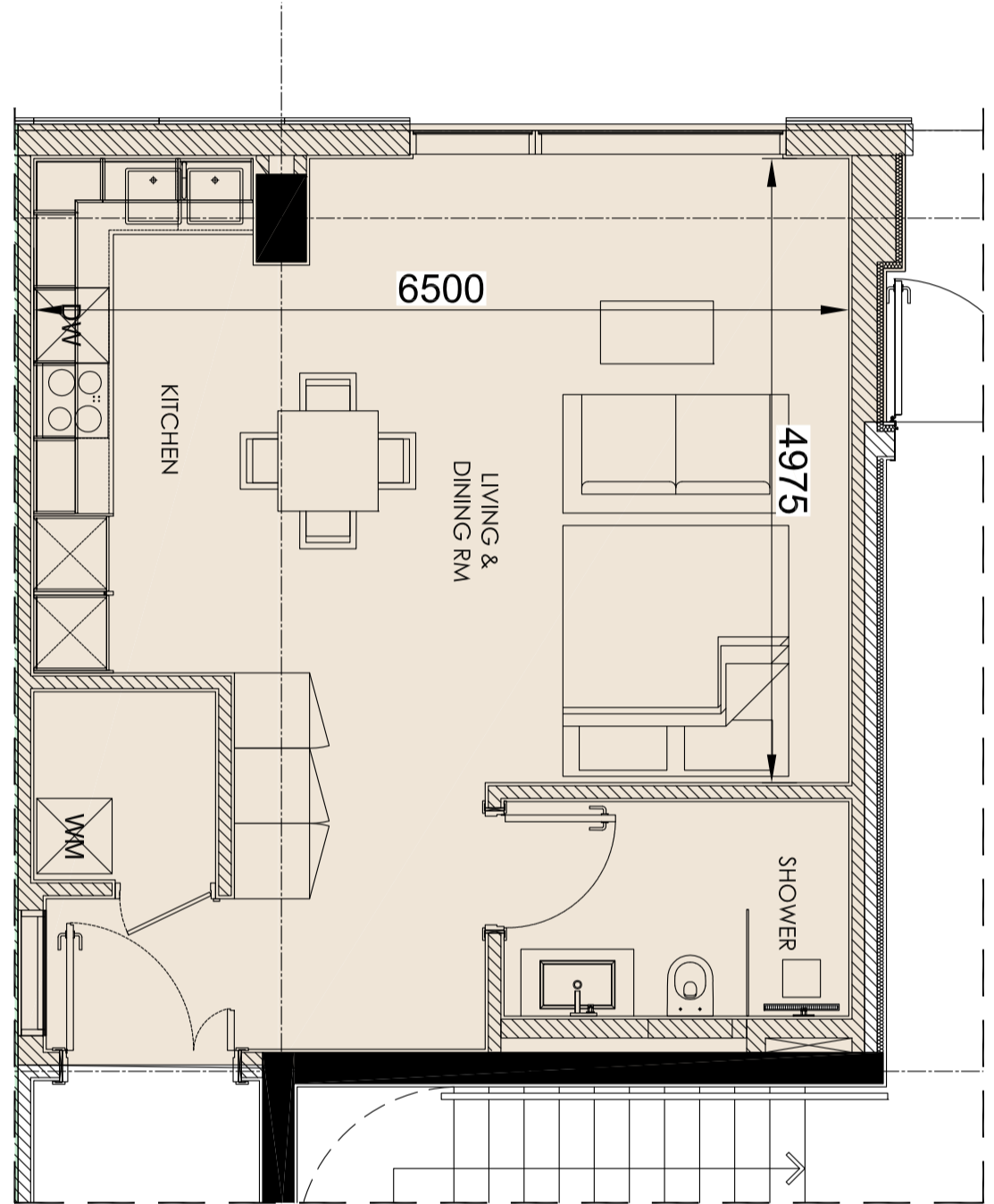
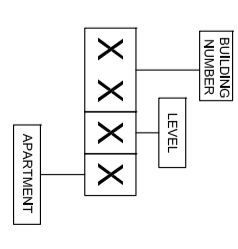
REV : 0

DO NOT SCALE

KEY 1



UNIT CODE



- C1G1
- C2G1
- B2G1

UNIT AREA = 528.29 sq.ft  
 TERRACE AREA = 0 sq.ft  
 TOTAL = 528.29 sq.ft

**Disclaimer:**  
 All dimensions are in millimeter.  
 This drawing is for illustrative purposes only and shall not be considered as exact scale replicas of the final product. The actual unit may have slight variances in size and design.



BUILDING - C2  
 GROUND FLOOR  
 STUDIO APARTMENT

27.05.2018      REV.: 0